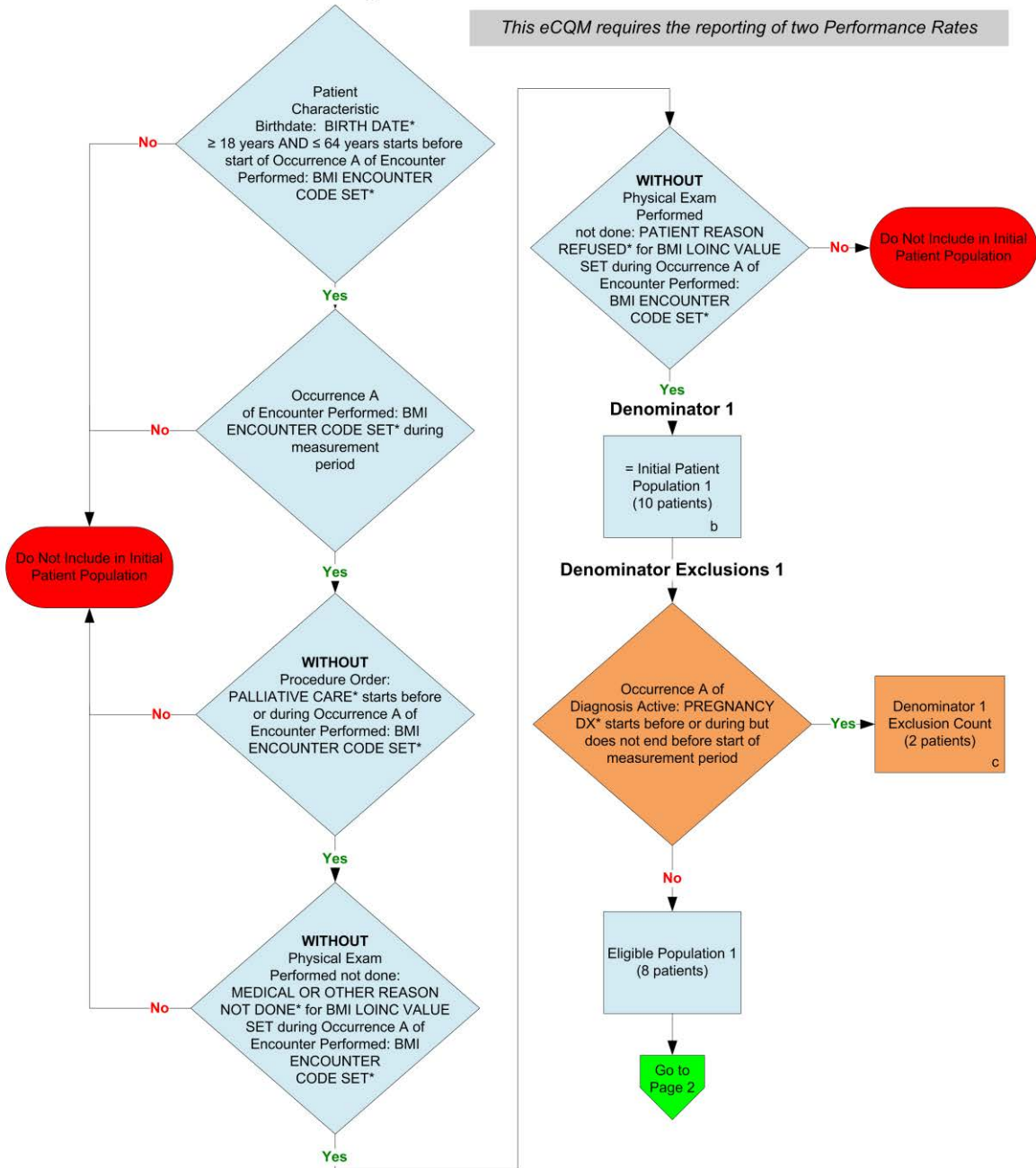


2014 eCQM Flow
Measure Identifier: CMS69v3
NQF 0421: Preventive Care and Screening: Body Mass Index (BMI) Screening and Follow-Up

Initial Patient Population 1

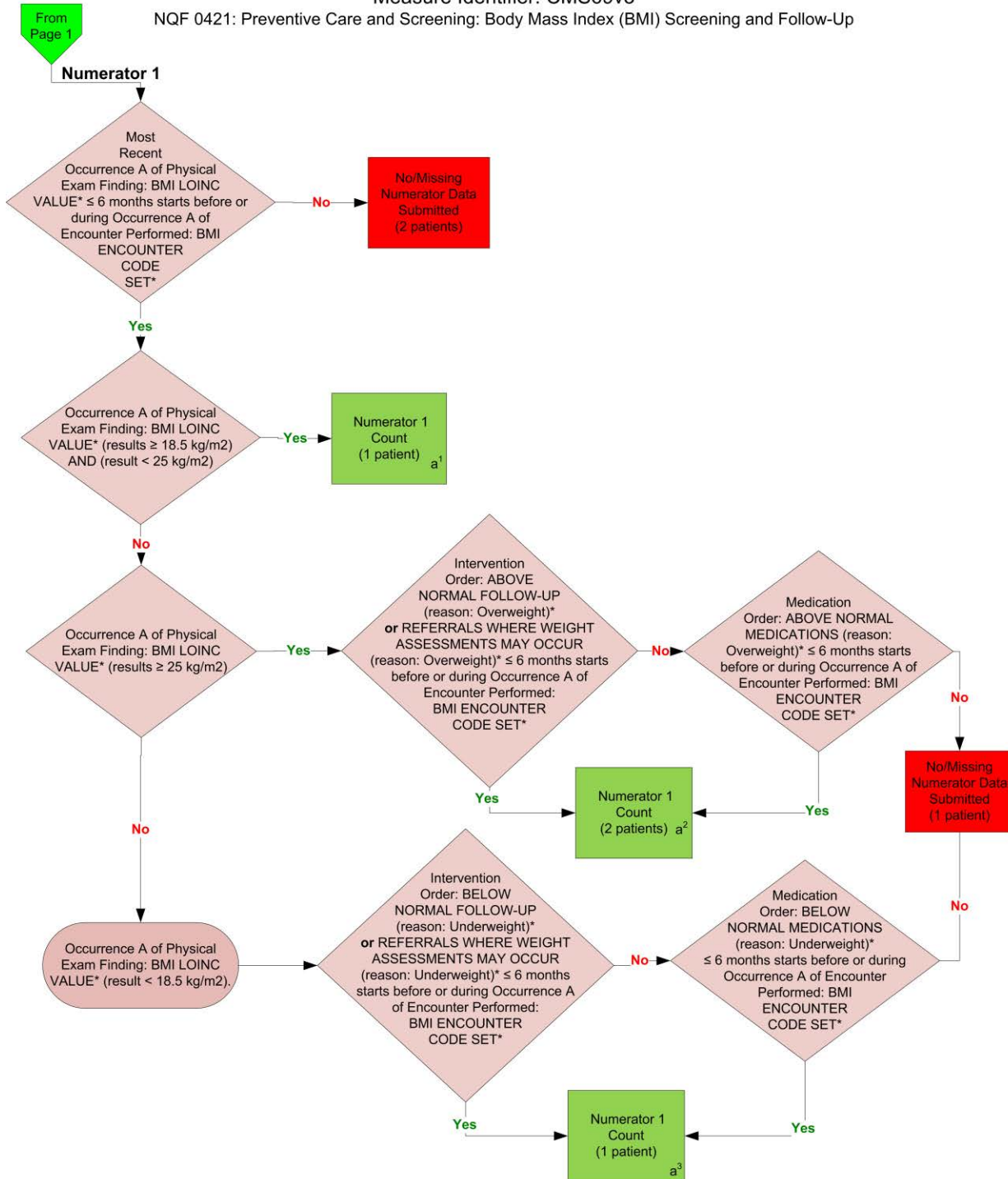
This eCQM requires the reporting of two Performance Rates



*Please refer to the specific section of the eCQM to identify the QDM data elements and associated value sets for use in reporting this eCQM.

2014 eCQM Measure Flows
Measure Identifier: CMS69v3

NQF 0421: Preventive Care and Screening: Body Mass Index (BMI) Screening and Follow-Up



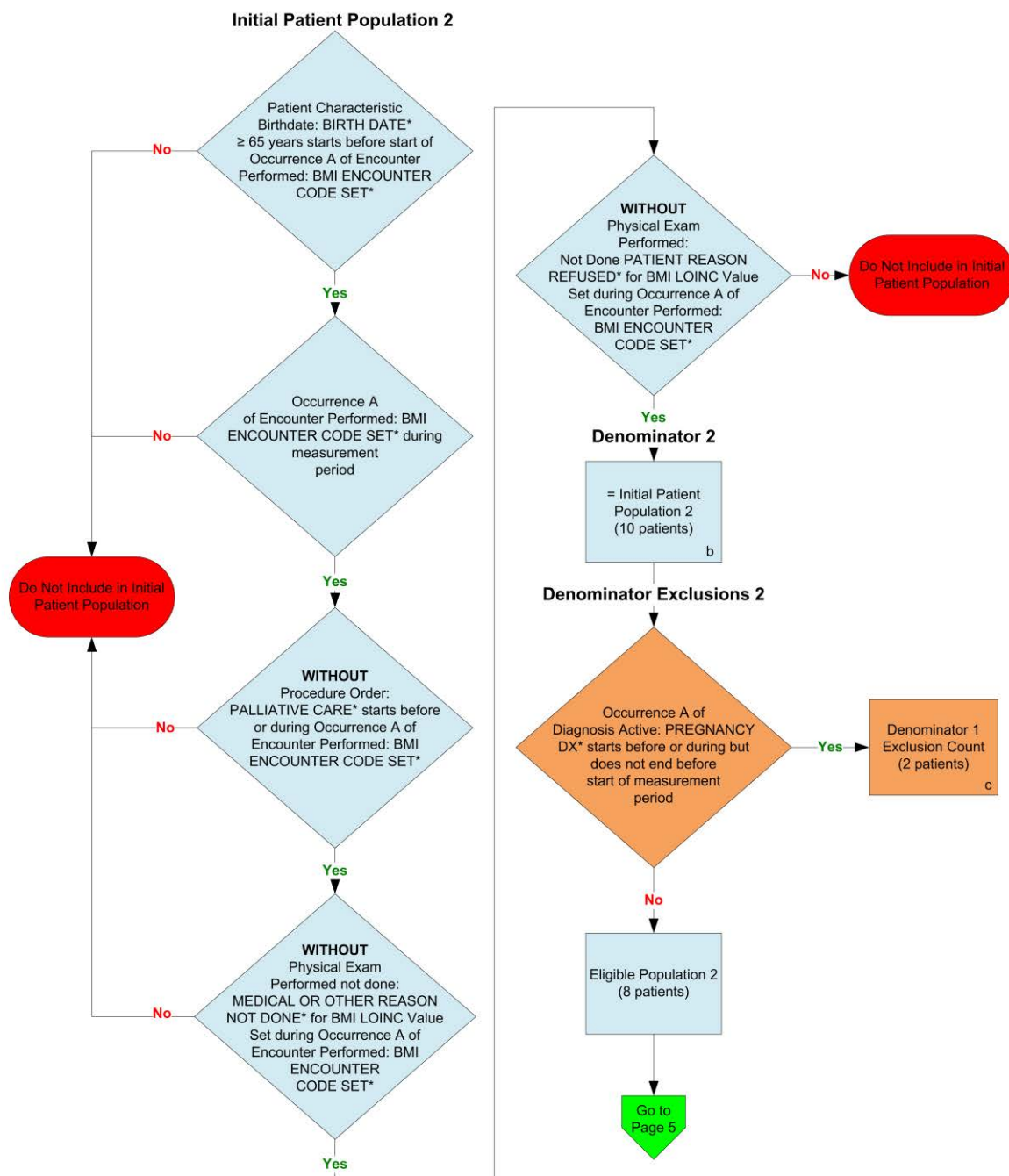
2014 eCQM Measure Flows
Measure Identifier: CMS69v3
NQF 0421: Preventive Care and Screening: Body Mass Index (BMI) Screening and Follow-Up

SAMPLE CALCULATION: *Combination of Initial Patient Population 1; Denominator 1; Numerator 1*

Performance Rate =

$$\frac{\text{Numerator (a}^1\text{+a}^2\text{+a}^3\text{ = 4 patients)}}{\text{Denominator (b =10 patients) – Denominator Exclusions (c = 2 patients) – Denominator Exceptions (N/A)}} = 50.00\%$$

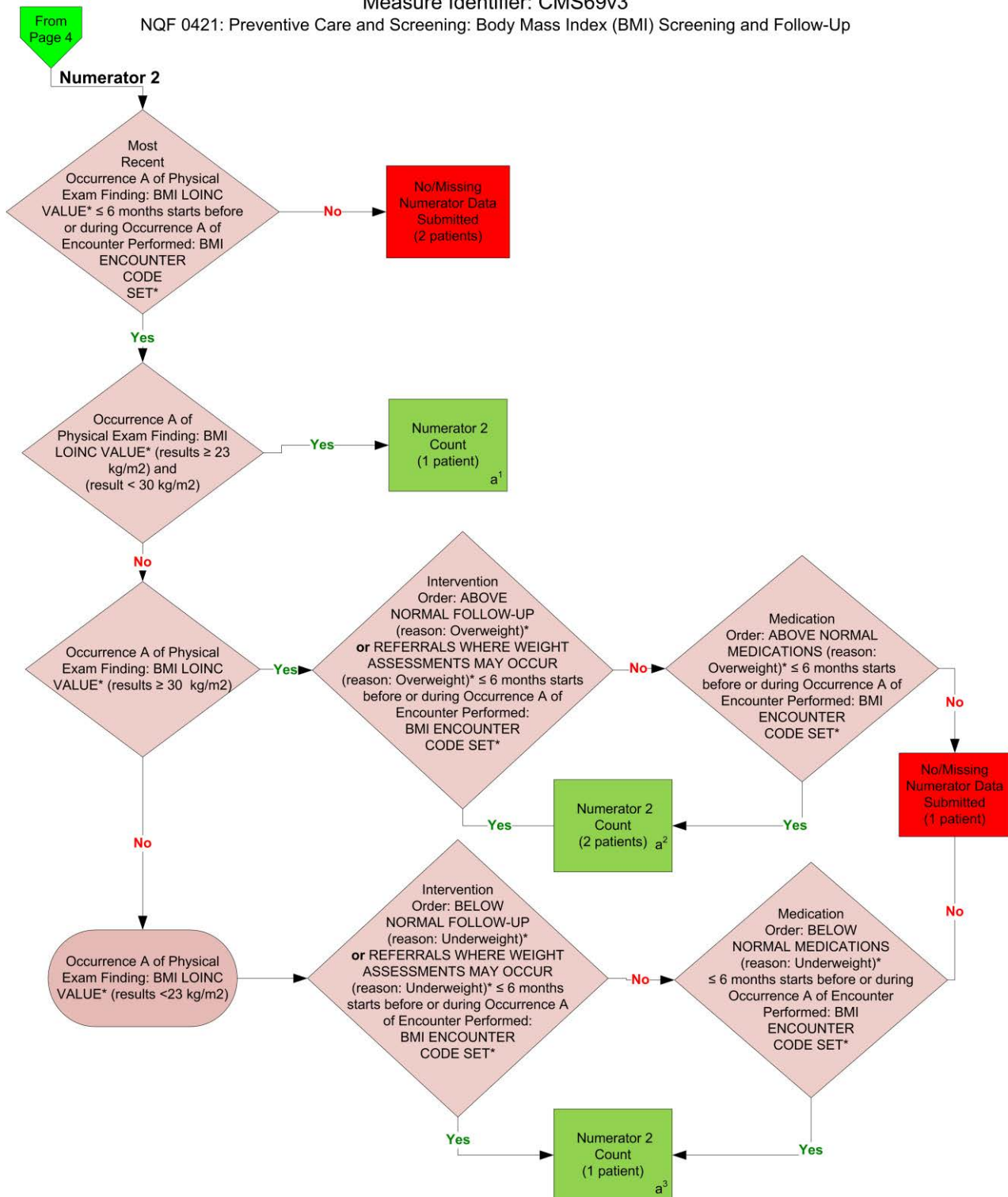
2014 eCQM Measure Flows
Measure Identifier: CMS69v3
NQF 0421: Preventive Care and Screening: Body Mass Index (BMI) Screening and Follow-Up



*Please refer to the specific section of the eCQM to identify the QDM data elements and associated value sets for use in reporting this eCQM.

2014 eCQM Measure Flows
Measure Identifier: CMS69v3

NQF 0421: Preventive Care and Screening: Body Mass Index (BMI) Screening and Follow-Up



*Please refer to the specific section of the eCQM to identify the QDM data elements and associated value sets for use in reporting this eCQM.

2014 eCQM Measure Flows
Measure Identifier: CMS69v3
NQF 0421: Preventive Care and Screening: Body Mass Index (BMI) Screening and Follow-Up

SAMPLE CALCULATION: *Combination of Initial Patient Population 2; Denominator 2; Numerator 2*

Performance Rate =

$$\frac{\text{Numerator (a}^1\text{+a}^2\text{+a}^3\text{=4 patients)}}{\text{Denominator (b =10 patients) – Denominator Exclusions (c=2 patients) – Denominator Exceptions (N/A)}} = 50.00\%$$

2014 eCQM Flows
Measure Identifier: CMS69v3
NQF 0421: Preventive Care and Screening: Body Mass Index (BMI) Screening and
Follow-Up

This eCQM requires the reporting of two Performance Rates

Please refer to the specific section of the eCQM to identify the QDM data elements and associated value sets for use in reporting this eCQM.

1. Start Initial Patient Population 1
2. Check Patient Characteristic Birthdate:
 - a. If the QDM data element, BIRTH DATE, is greater than or equal to 18 years and less than or equal to 64 years starts before start of Occurrence A of Encounter Performed QDM data element, BMI ENCOUNTER CODE SET, equals No, do not include in Initial Patient Population. Stop Processing.
 - b. If the QDM data element, BIRTH DATE, is greater than or equal to 18 years and less than 64 years starts before start of Occurrence A of Encounter Performed QDM data element, BMI ENCOUNTER CODE SET equals Yes, proceed to check Encounter Performed.
3. Check Encounter Performed:
 - a. If Occurrence A of the QDM data element, BMI ENCOUNTER CODE SET, during measurement period equals Yes, go to check Procedure Order.
 - b. If Occurrence A of the QDM data element, BMI ENCOUNTER CODE SET, during measurement period equals NO, do not include in Initial Patient Population. Stop Processing.
4. Check Procedure Order:
 - c. If Without the QDM data element, PALLIATIVE CARE, starts before or during Occurrence A of Encounter Performed QDM data element, BMI ENCOUNTER CODE SET, equals Yes, go to check Physical Exam Performed Not Done.
 - d. If Without the QDM data element, PALLIATIVE CARE, starts before or during Occurrence A of the Encounter Performed QDM data element, BMI ENCOUNTER CODE SET, equals No, do not include in Initial Patient Population. Stop Processing.
5. Check Physical Exam Performed Not Done:
 - a. If Without the QDM data element, MEDICAL OR OTHER REASON NOT DONE, for BMI LOINC VALUE SET during Occurrence A of Encounter Performed QDM data element, BMI ENCOUNTER CODE SET, equals Yes, go to check Physical Exam Performed Not Done.
 - b. If Without the QDM data element, MEDICAL OR OTHER REASON NOT DONE, for BMI LOINC Value LOINC Value Set during Occurrence A of Encounter Performed QDM data element, BMI ENCOUNTER CODE SET, equals No, do not include in Initial Patient Population. Stop Processing.
6. Check Physical Exam Performed Not Done:
 - a. If Without the QDM data element, PATIENT REASON REFUSED, for BMI LOINC VALUE SET during Occurrence A of Encounter Performed QDM data element, BMI ENCOUNTER CODE SET, equals Yes, include in Initial Patient Population 1 and go to Denominator 1.
 - b. If Without the QDM data element, MEDICAL OR OTHER REASON NOT DONE, for BMI LOINC Value LOINC Value Set during Occurrence A of Encounter Performed

QDM data element, BMI ENCOUNTER CODE SET, equals No, do not include in Initial Patient Population. Stop Processing.

7. Start Denominator 1
 - a. Denominator equals the Initial Patient Population. Denominator is represented by letter B in the sample calculation listed at the end of Initial Patient Population 1. Letter B equals 10 patients in the sample calculation.
8. Start Denominator Exclusions 1
9. Check for Diagnosis Active:
 - a. If Occurrence A of the QDM data element, PREGNANCY DX, starts before or during but does not end before start of measurement period equals Yes, include in Denominator 1 Exclusions count. Denominator Exclusion is represented by letter C in the sample calculation listed at the end of Initial Patient Population 1. Letter C equals 2 patients in the sample calculation.
 - b. If Occurrence A of the QDM data element, PREGNANCY DX, starts before or during but does not end before start of measurement period equals No, go to Numerator 1.
10. Start Numerator 1
11. Check for Physical Exam Finding:
 - a. If the Most Recent Occurrence A of the QDM data element, BMI LOINC VALUE, less than or equal to 6 months starts before or during Occurrence A of Encounter Performed QDM data element, BMI ENCOUNTER CODE SET, equals Yes, go to check Physical Exam Finding.
 - b. If the Most Recent Occurrence A of the QDM data element, BMI LOINC VALUE, less than or equal to 6 months starts before or during Occurrence A of Encounter Performed QDM data element, BMI ENCOUNTER CODE SET equals No, include in the No/Missing Data Submitted count. Stop Processing. Continue on to Initial Patient Population 2.
12. Check for Physical Exam Finding:
 - a. If Occurrence A of the QDM data element, BMI LOINC VALUE, (result greater than or equal to 18.5 kg/m²) and (result less than 25 kg/m²) equals Yes, include in Numerator 1 Count. Numerator is represented by letter A¹ in the sample calculation listed at the end of Initial Patient Population 1. Letter A¹ equals 1 patient in the sample calculation. Continue on to Initial Patient Population 2.
 - b. If Occurrence A of the QDM data element, BMI LOINC VALUE, (result greater than or equal to 18.5 kg/m²) and (result less than 25 kg/m²) equals No, go to check Physical Exam Finding.
13. Check for Physical Exam Finding:
 - a. If Occurrence A of the QDM data element, BMI LOINC VALUE, (result greater than or equal to 25 kg/m²) equals Yes, go to check Intervention Order.
 - b. If Occurrence A of the QDM data element, BMI LOINC VALUE, (result greater than or equal to 25 kg/m²) equals No, go to Physical Exam Finding.
14. Check Intervention Order:
 - a. If the QDM data element, ABOVE NORMAL FOLLOW-UP (reason: Overweight), or REFERRALS WHERE WEIGHT ASSESSMENT MAY OCCUR (reason: Overweight), less than or equal to 6 months starts before or during Occurrence A of Encounter Performed QDM data element, BMI ENCOUNTER CODE SET, equals Yes, include in Numerator 1 Count. Numerator is represented by letter A² in the

- sample calculation listed at the end of Initial Patient Population 1. Letter A² equals 2 patients in the sample calculation. Continue on to Initial Patient Population 2.
- b. If the QDM data element, ABOVE NORMAL FOLLOW-UP (reason: Overweight), or REFERRALS WHERE WEIGHT ASSESSMENT MAY OCCUR (reason: Overweight), less than or equal to 6 months starts before or during Occurrence A of Encounter Performed QDM data element, BMI ENCOUNTER CODE SET, equals No, go to check Medication Order.
15. Check Medication Order:
- a. If the QDM data element, ABOVE NORMAL MEDICATIONS (reason: Overweight), less than or equal to 6 months starts before or during Occurrence A of Encounter Performed QDM data element, BMI ENCOUNTER CODE SET, equals Yes, include in Numerator 1 Count. Numerator is represented by letter A² in the sample calculation listed at the end of Initial Patient Population 1. Letter A² equals 2 patients in the sample calculation. Continue on to Initial Patient Population 2.
 - b. If the QDM data element, ABOVE NORMAL MEDICATIONS, less than or equal to 6 months starts before or during Occurrence A of Encounter Performed QDM data element, BMI ENCOUNTER CODE SET, equals No, include in the No/Missing Data Submitted count. Stop Processing. Continue on to Initial Patient Population 2.
16. Check Physical Exam Finding:
- a. Occurrence A of the QDM data element, BMI LOINC VALUE, (result less than 18.5 kg/m²) equals Yes, go to check Intervention Order.
17. Check Intervention Order:
- a. If the QDM data element, BELOW NORMAL FOLLOW-UP (reason: Underweight), or REFERRALS WHERE WEIGHT ASSESSMENT MAY OCCUR (reason: Underweight), less than or equal to 6 months starts before or during Occurrence A of Encounter Performed QDM data element, BMI ENCOUNTER CODE SET, equals Yes, include in Numerator 1 Count. Numerator is represented by letter A³ in the sample calculation listed at the end of Initial Patient Population 1. Letter A³ equals 1 patient in the sample calculation. Continue on to Initial Patient Population 2.
 - b. If the QDM data element, BELOW NORMAL FOLLOW-UP (reason: Underweight), or REFERRALS WHERE WEIGHT ASSESSMENT MAY OCCUR (reason: Underweight), less than or equal to 6 months starts before or during Occurrence A of Encounter Performed QDM data element, BMI ENCOUNTER CODE SET, equals No, go to check Medication Order.
18. Check Medication Order:
- a. If the QDM data element, BELOW NORMAL MEDICATIONS (reason: Underweight), less than or equal to 6 months starts before or during Occurrence A of Encounter Performed QDM data element, BMI ENCOUNTER CODE SET, equals Yes, include in Numerator 1 Count. Numerator is represented by letter A³ in the sample calculation listed at the end of Initial Patient Population 1. Letter A³ equals 1 patient in the sample calculation. Continue on to Initial Patient Population 2.
 - b. If the QDM data element, BELOW NORMAL MEDICATIONS (reason: Underweight), less than or equal to 6 months starts before or during Occurrence A of Encounter Performed QDM data element, BMI ENCOUNTER CODE SET, equals No, include in the No/Missing Data Submitted count. Stop Processing. Continue on to Initial Patient Population 2.

SAMPLE CALCULATION: *Combination of Initial Patient Population 1; Denominator 1; Numerator 1*

Performance Rate =

Numerator ($a^1 + a^2 + a^3 = 4$ patients)

÷

Denominator (b=10 patients) – Denominator Exclusions (c = 2 patients) – *Denominator Exceptions (N/A)*

= 50.00%

1. Start Initial Patient Population 2
2. Check Patient Characteristic Birthdate:
 - a. If the QDM data element, BIRTH DATE, is greater than or equal to 65 years starts before start of Occurrence A of Encounter Performed QDM data element, BMI ENCOUNTER CODE SET equals No, do not include in Initial Patient Population. Stop Processing.
 - b. If the QDM data element, BIRTH DATE, is greater than or equal to 65 years starts before start of Occurrence A of Encounter Performed QDM data element, BMI ENCOUNTER CODE SET equals Yes, proceed to check Encounter Performed.
3. Check Encounter Performed:
 - a. If Occurrence A of the QDM data element, BMI ENCOUNTER CODE SET, during measurement period equals Yes, go to check Procedure Order.
 - b. If Occurrence A of the QDM data element, BMI ENCOUNTER CODE SET, during measurement period equals NO, do not include in Initial Patient Population. Stop Processing.
4. Check Procedure Order:
 - a. If Without the QDM data element, PALLIATIVE CARE, starts before or during Occurrence A of Encounter Performed QDM data element, BMI ENCOUNTER CODE SET, equals Yes, go to check Physical Exam Performed Not Done.
 - b. If Without the QDM data element, PALLIATIVE CARE, starts before or during Occurrence A of the Encounter Performed QDM data element, BMI ENCOUNTER CODE SET, equals No, do not include in Initial Patient Population. Stop Processing.
5. Check Physical Exam Performed Not Done:
 - a. If Without the QDM data element, MEDICAL OR OTHER REASON NOT DONE, for BMI LOINC Value Set during Occurrence A of Encounter Performed QDM data element, BMI ENCOUNTER CODE SET, equals Yes, go to check Physical Exam Performed Not Done.
 - b. If Without the QDM data element, MEDICAL OR OTHER REASON NOT DONE, for BMI LOINC Value Set during Occurrence A of Encounter Performed QDM data element, BMI ENCOUNTER CODE SET, equals No, do not include in Initial Patient Population. Stop Processing.
6. Check Physical Exam Performed Not Done:
 - a. If Without the QDM data element, PATIENT REASON REFUSED, for BMI LOINC Value Set during Occurrence A of Encounter Performed QDM data element, BMI ENCOUNTER CODE SET, equals Yes, include in Initial Patient Population 2 and go to Denominator 2.

- b. If Without the QDM data element, PATIENT REASON REFUSED, for BMI LOINC Value Set during Occurrence A of Encounter Performed QDM data element, BMI ENCOUNTER CODE SET, equals No, do not include in Initial Patient Population. Stop Processing.
- 7. Start Denominator 2
 - a. Denominator equals the Initial Patient Population. Denominator is represented by letter B in the sample calculation listed at the end of Initial Patient Population 2. Letter B equals 10 patients in the sample calculation.
- 8. Start Denominator Exclusions 2
- 9. Check Diagnosis Active:
 - a. If Occurrence A of the QDM data element, PREGNANCY DX, starts before or during but does not end before start of measurement period equals Yes, include in Denominator 2 Exclusions count. Denominator Exclusion is represented by letter C in the sample calculation listed at the end of Initial Patient Population 2. Letter C equals 2 patients in the sample calculation.
 - b. If Occurrence A of the QDM data element, PREGNANCY DX, starts before or during but does not end before start of measurement period equals No, go to Numerator 2.
- 10. Start Numerator 2
- 11. Check Physical Exam Finding:
 - a. If the Most Recent Occurrence A of the QDM data element, BMI LOINC VALUE, less than or equal to 6 months starts before or during Occurrence A of Encounter Performed QDM data element, BMI ENCOUNTER CODE SET, equals Yes, go to check Physical Exam Finding.
 - b. If the Most Recent Occurrence A of the QDM data element, BMI LOINC VALUE, less than or equal to 6 months starts before or during Occurrence A of Encounter Performed QDM data element, BMI ENCOUNTER CODE SET equals No, include in the No/Missing Data Submitted count. Stop Processing.
- 12. Check Physical Exam Finding:
 - a. If Occurrence A of the QDM data element, BMI LOINC VALUE, (result greater than or equal to 23 kg/m²) and (result less than 30 kg/m²) equals Yes, include in Numerator 2 Count. Numerator is represented by letter A¹ in the sample calculation listed at the end of Initial Patient Population 2. Letter A¹ equals 1 patient in the sample calculation.
 - b. If Occurrence A of the QDM data element, BMI LOINC VALUE, (result greater than or equal to 23 kg/m²) and (result less than 30 kg/m²) equals No, go to Physical Exam Finding.
- 13. Check Physical Exam Finding:
 - a. If Occurrence A of the QDM data element, BMI LOINC VALUE, (result greater than or equal to 30 kg/m²) equals Yes, go to check Intervention Order.
 - b. If Occurrence A of the QDM data element, BMI LOINC VALUE, (result greater than or equal to 30 kg/m²) equals No, go to check Physical Exam Finding.

14. Check Intervention Order:

- a. If the QDM data element, ABOVE NORMAL FOLLOW-UP (reason: Overweight), or REFERRALS WHERE WEIGHT ASSESSMENT MAY OCCUR (reason: Overweight), less than or equal to 6 months starts before or during Occurrence A of Encounter Performed QDM data element, BMI ENCOUNTER CODE SET, equals Yes, include in Numerator 2 Count. Numerator is represented by letter A² in the sample calculation listed at the end of Initial Patient Population 2. Letter A² equals 2 patients in the sample calculation.
- b. If the QDM data element, ABOVE NORMAL FOLLOW-UP (reason: Overweight), or REFERRALS WHERE WEIGHT ASSESSMENT MAY OCCUR (reason: Overweight), less than or equal to 6 months starts before or during Occurrence A of Encounter Performed QDM data element, BMI ENCOUNTER CODE SET, equals No, go to check Medication Order.

15. Check Medication Order:

- a. If the QDM data element, ABOVE NORMAL MEDICATIONS (reason: Overweight), less than or equal to 6 months starts before or during Occurrence A of Encounter Performed QDM data element, BMI ENCOUNTER CODE SET, equals Yes, include in Numerator 2 Count. Numerator is represented by letter A² in the sample calculation listed at the end of Initial Patient Population 2. Letter A² equals 2 patients in the sample calculation.
- b. If the QDM data element, ABOVE NORMAL MEDICATIONS (reason: Overweight), less than or equal to 6 months starts before or during Occurrence A of Encounter Performed QDM data element, BMI ENCOUNTER CODE SET, equals No, include in the No/Missing Data Submitted count. Stop Processing.

16. Physical Exam Finding:

- a. Occurrence A of the QDM data element, BMI LOINC VALUE, (result less than 23 kg/m2) equals Yes, go to check Intervention Order.

17. Check Intervention Order:

- a. If the QDM data element, BELOW NORMAL FOLLOW-UP (reason: Underweight), or REFERRALS WHERE WEIGHT ASSESSMENT MAY OCCUR (reason: Underweight), less than or equal to 6 months starts before or during Occurrence A of Encounter Performed QDM data element, BMI ENCOUNTER CODE SET, equals Yes, include in Numerator 2 Count. Numerator is represented by letter A³ in the sample calculation listed at the end of Initial Patient Population 2. Letter A³ equals 1 patient in the sample calculation.
- b. If the QDM data element, BELOW NORMAL FOLLOW-UP (reason: Underweight), or REFERRALS WHERE WEIGHT ASSESSMENT MAY OCCUR (reason: Underweight), less than or equal to 6 months starts before or during Occurrence A of Encounter Performed QDM data element, BMI ENCOUNTER CODE SET, equals No, go to check Medication Order.

18. Check Medication Order:

- a. If the QDM data element, BELOW NORMAL MEDICATIONS (reason: Underweight), less than or equal to 6 months starts before or during Occurrence A of Encounter Performed QDM data element, BMI ENCOUNTER CODE SET, equals Yes, include in Numerator 2 Count. Numerator is represented by letter A³ in the sample calculation listed at the end of Initial Patient Population 2. Letter A³ equals 1 patient in the sample calculation.
- b. If the QDM data element, BELOW NORMAL MEDICATIONS (reason: Underweight), less than or equal to 6 months starts before or during Occurrence A of Encounter

Performed QDM data element, BMI ENCOUNTER CODE SET, equals No, include in the No/Missing Data Submitted count. Stop Processing.

SAMPLE CALCULATION: *Combination of Initial Patient Population 2; Denominator 2; Numerator 2*

Performance Rate =

Numerator ($a^1 + a^2 + a^3 = 4$ patients)

÷

Denominator (b=10 patients) – Denominator Exclusions (c = 2 patients) – *Denominator Exceptions (N/A)*

= **50.00%**